

UK STEEL CAPACITIES AND CAPABILITIES AN OVERVIEW OF THE UK'S STEEL MANUFACTURING SITES, PRODUCTS AND VALUE



INTRODUCTION

This document provides an overview of the sites of UK Steel members across the UK, the impressive range of products made by them, and the value they provide to the UK economy. This is a snapshot of a highly developed and modern steel industry, investing in its future to ensure a sustainable supply of high quality, net-zero steel products for the UK economy.

UK STEEL IN USE

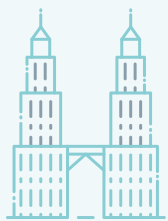
Steel is ubiquitous. Almost everything is either made from steel or made using steel. In the UK and across the globe, advanced steels manufactured in the UK form iconic buildings, enable the cars we drive, provide the track that supports our railways and are present in every civil aircraft in the sky today. The UK steel industry is a world class industry supporting world class manufacturing.



96% of Network Rail's steel rail is sourced from Scunthorpe and it can also be found across Europe including in France, Germany and Italy



250,000 tonnes of steel made by Celsa Steel in Cardiff will support the building of Hinkley Point C Nuclear Power Station



Steel from British Steel can be found in buildings such as the Olympic Stadium, the Shard and the Petronas Towers in Kuala Lumpur



Liberty Speciality Steels made in Rotherham can be found in every Boeing and Airbus civil aircraft in production today



Tata Steel's UK business supplies **ALMOST HALF OF UK** carmakers' flat steel requirements



Nearly all **1P, 2P, 5P & 10P UK COINS** in circulation originate from steel made in Port Talbot



Sheffield Forgemasters forms a vital part of the UK's defence supply chain and has been providing specialist forgings and castings to navies around the world for over 200 years



Stainless steels, made and invented in Sheffield, can be found in submarines and other seafaring craft around the world

THE IMPORTANCE OF UK STEEL PRODUCTION:

1. UK STEEL PRODUCTION STRENGTHENS THE UK'S RESILIENCE

Domestic steel production is critical to ensuring resilient supply chains, helping ensure we can act independently as a sovereign nation. Steel is one of the most widely used materials in the world, essential to our construction and manufacturing industries, and the building blocks of our national infrastructure. Ongoing supply chain blockages, and the increasing market disruption caused by the war in Ukraine, have demonstrated the fragility of global supply chains, the dangers of over-reliance on a small number of global suppliers, and the importance of rebuilding local supply chains closer to home. Domestic steel production is a strategic asset that any modern industrial economy would be considerably poorer without.

2. STEEL JOBS ARE SUPPLY HIGH-VALUE, HIGH-SKILL JOBS ACROSS THE UK

The UK steel industry employs 34,500 people in the UK. These jobs are more than just employment statistics. The average wage in our sector is £37,629, 45% higher than the national average and 59% above the regional average in Wales, and Yorkshire & Humberside, where these jobs are concentrated. The high pay in our sector reflects the skilled nature of the jobs we provide. Steel companies train hundreds of apprentices each year, employ thousands of graduates, fund and train tomorrow's material scientists, and contribute to the wealth of the UK's world-leading research and innovation. Steel sector employment is a major asset in efforts to level up the UK and create new economic opportunities across the regions.

3. A GROWING MARKET OPPORTUNITY

UK demand for steel is expected to grow 10% by 2030, driven in large part by the expanding steel intensive sectors like offshore wind and nuclear, as well as renewed investment in transport infrastructure. Capturing this new opportunity and replacing imports with more domestic supply could result in a 50% increase in the sector's contribution to the UK economy, expanding its gross value added from £2.6 billion/year today to almost £4 billion/year by the end of the decade. Looking

beyond the UK market, global steel demand is projected to increase by more than a third by 2050, providing a growing and valuable export market for UK producers and creating further economic growth for our country. Moreover, with the UK aiming to establish one of the world's first net-zero steel sectors and with global demand for net-zero steel set to balloon in the years ahead, the UK should be well placed to supply this. UK steel consumers will also benefit from access to a secure and reliable supply of net-zero steel.

4. STEEL IS ESSENTIAL TO MEETING OUR ENVIRONMENTAL CHALLENGES

Steel is critical to our future net-zero economy, our wind turbines, our electric vehicles, and our energy-efficient housing. Steel is cost-effective, endlessly recyclable, and incredibly versatile. However, UK steel consumption gives rise to 30 million tonnes of CO2 each year, equivalent to 4% of the UK's total consumption-based emissions. A responsible UK decarbonisation policy must take ownership not just of the emissions we produce within our borders, but also those related to goods we import. This point is critical for the increasing numbers of consumers taking account of "Scope 3 emissions" in their carbon footprinting. The most reliable way to reduce these consumption emissions is to support and invest in net-zero steel production here in the UK. The UK is well placed to do this, with expertise in electric arc furnace production, a prodigious domestic supply of scrap steel and access to carbon storage facilities in the North Sea.

5. STEEL PRODUCTION BOOSTS OUR INFRASTRUCTURE POTENTIAL

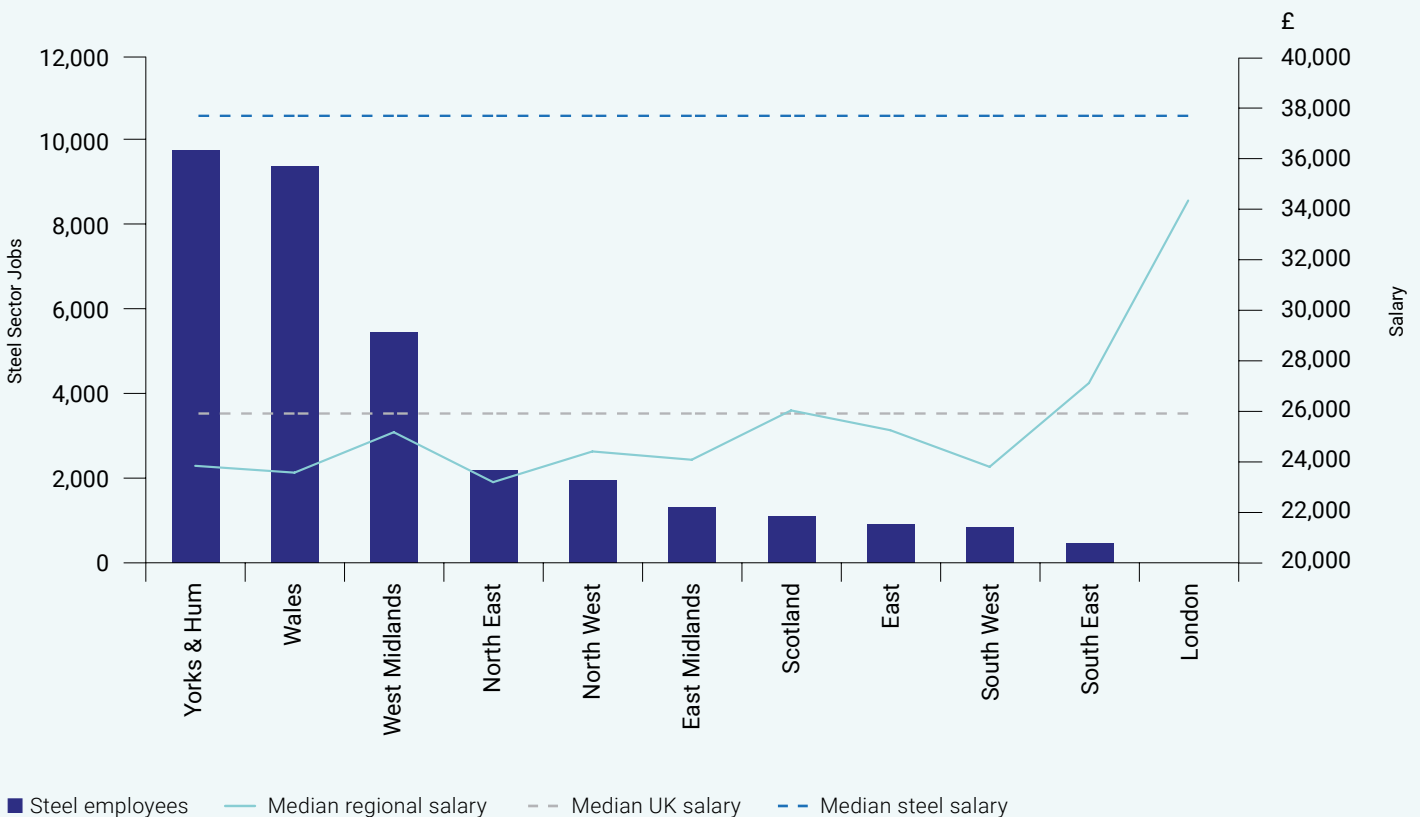
The use of domestically produced materials and products boost the economic contribution an infrastructure project can have for the UK economy. Central government projects will require 5.2 million tonnes of steel in the next five years for everything from new nuclear plants, to offshore wind farms, to new hospitals and schools, and of course HS2. The use of UK-produced steel for these projects could boost the UK economy by as much as £4 billion and support 11,000 jobs in steel companies and their supply chains, compared to a scenario in which we source all this steel from abroad.

UK STEEL IN NUMBERS

THE UK STEEL SECTOR:

- Produces 7.2 million tonnes of crude steel a year, around 70% of the UK's annual requirement¹
- Employs 34,500 people directly in the UK and supports a further 43,000 in supply chains²
- Pays a median steel sector salary of £37,629. This is 45% higher than the UK national median and 59% higher than the regional median in Wales, Yorkshire, and Humberside, where our jobs are concentrated³
- Makes a £2.4 billion direct contribution to UK GDP and supports a further £3.1 billion in supply chains⁴
- Makes a £2.4 billion direct contribution to the UK's balance of trade⁵

GEOGRAPHICAL DISTRIBUTION OF JOBS IN THE STEEL SECTOR AND COMPARISON WITH REGIONAL PAY AVERAGES:



Source: ONS Nomis Web, ONS Annual Survey of Hours and Earnings, UK Steel Analysis

¹ UK Steel (2022) Key Statistics Guide 2021

² Direct employment sourced from ONS Industry (2, 3 and 5 - digit SIC) - Business Register and Employment Survey (BRES): Table 2. 2020 Provisional Edition. Estimated supply chain jobs calculated using multipliers from ONS UK input-output analytical tables.

³ Steel sector wages sourced from ONS - Earnings and hours worked, industry by four-digit SIC: ASHE Table 16. 2021 Provisional Edition. Regional wages sourced from Earnings and hours worked, place of work by local authority: ASHE Table 7. 2021 Provisional Edition.

⁴ ONS - GDP output approach - low-level aggregates 2021

⁵ International Steel Statistic Bureau - value of UK steel sector exports 2021 net of imports made by the steel sector for raw materials and equipment.



THE UK'S STEEL PRODUCERS

BRITISH STEEL

Workforce:

4,500

Steelmaking capacity:

3 million tonnes per year

Production type:

Integrated steelworks, Basic Oxygen Steelmaking

Products:

1,450+ different specifications of steel, including wire rod, sections, special profiles, rail & semi-finished products

What is it used for:

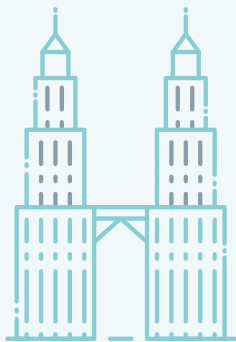
Our steel is used in a wide range of applications, including rail, construction, automotive, engineering, earth moving, mining & many more



96% OF NETWORK RAIL'S STEEL RAIL IS SOURCED FROM SCUNTHORPE



BRITISH STEEL'S PRODUCTS ARE USED BY CATERPILLAR IN THE MANUFACTURE OF THEIR CONSTRUCTION, AGRICULTURAL, & MINING MACHINERY



STEEL FROM BRITISH STEEL IN CAN BE FOUND IN BUILDINGS SUCH AS THE OLYMPIC STADIUM, THE SHARD AND THE PETRONAS TOWERS IN KUALA LUMPUR



- British Steel is headquartered in Scunthorpe, with manufacturing, processing and research and development facilities across the UK and Ireland
- An extensive network of international sales offices
- Key customers include Network Rail, Caterpillar, Severfield, Bekaert
- British Steel works with key customers in the rail, construction, yellow goods and automotive sectors to deliver high quality products and service led solutions. We supply materials to last longer and reduce weight such as S460M high strength steels, zinoco® rail and weathering steels

THE UK'S STEEL PRODUCERS



CELSA STEEL

Workforce:

>1,800 (including downstream fabrication facilities)

Steelmaking capacity:

1.1 million tonnes per year

Production type:

Electric Arc Furnace

Products:

Steel Long Products – steel reinforcing bar, steel reinforcing bar in coil, wire rod, various merchant bars & light sections (flats, angles, channels, plain round bars)

What is it used for:

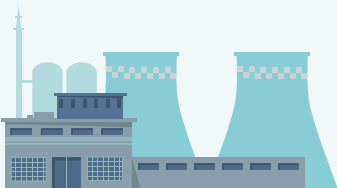
Construction industry & general engineering



11,520 TONNES OF STEEL USED TO HELP BUILD THE HS2 S1 SECTION, LONDON



23,000 TONNES OF STEEL USED TO HELP BUILD THE BATTERSEA DEVELOPMENT, LONDON



250,000 TONNES OF REINFORCING STEEL PROVIDED TO HINKLEY POINT NUCLEAR POWER STATION



- Number one recycling company in the UK
- Local Sourcing: 100% of scrap comes from the UK. 98% of raw material is recycled scrap
- Our material travels less than 500 miles from source to construction site
- As a result of vertical integration of the Group, we contribute heavily to the circular economy, from the separation and recovery of scrap metal, to its transformation once again into new steel products

Celsa Steel UK, Building 57, Castle Works, East Moors Road, Cardiff, CF24 5NN

queries@celsauk.com www.celsauk.com

THE UK'S STEEL PRODUCERS



SHEFFIELD FORGEMASTERS

Workforce:

605

Steelmaking capacity:

40,000 tonnes per year

Production type:

Electric Arc Furnace

Products:

Heavy and technically challenging forgings & castings. Consultancy services, design for manufacture & technology transfer, UKAS accredited laboratory testing.

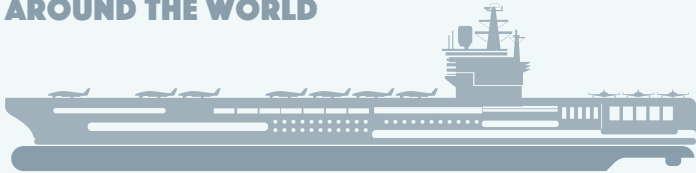
What is it used for:

Defence industry, civil nuclear, power generation, pressure vessels, offshore oil and gas, steel processing sector. Design input into renewable energy projects notably nuclear SMRs, fusion reactors and offshore wind.

A WORLD LEADER IN THE SUPPLY OF LARGE STEEL CASTINGS AND FORGINGS FOR OFFSHORE OIL AND GAS APPLICATIONS



HAS A LONG HISTORY, OVER 200 YEARS, OF SUPPLYING FORGED AND CAST MECHANICAL EQUIPMENT FOR NAVIES AROUND THE WORLD



– Sheffield Forgemasters research and development business (RD&T) offers a range of services including complex modelling of steel behaviour from liquid steel, deformation, heat treatment and property prediction as well as characterisation

Sheffield Forgemasters, Brightside Lane, Sheffield S9 2RW

sales@sfel.com www.sheffieldforgemasters.com



THE UK'S STEEL PRODUCERS

LIBERTY STEEL

Workforce:

2,300

Steelmaking capacity:

1.2 million tonnes per year

Production type:

Electric Arc Furnace

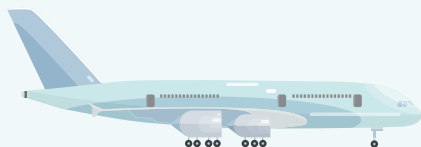
Products:

A wide range of long and flat products; hot rolled and cold finished bar, merchant bar, rebar, billets, blooms, ingots, plate, hot rolled coil, cold rolled coil, narrow strip, precision strip, hollow sections, pipe, semi-finished products and powder metals.

What is it used for:

Aerospace, construction, infrastructure, oil & gas, power generation, automotive, marine and yellow goods

LIBERTY STEEL UK USES 100% LOCALLY SOURCED RECYCLED SCRAP AT ITS ROTHERHAM EAF MILL



LIBERTY STEEL MADE IN THE UK CAN BE FOUND ON EVERY BOEING AND AIRBUS AIRCRAFT IN PRODUCTION TODAY



- Have a long-established track record of supplying on and off-shore steels for power generation to customers across the globe with products such as steel plate and bar, longitudinally submerged arc welded pipe, steel blooms and billets
- Liberty Steel plants have played their part in strategically important work for UK security, defence and nationally important infrastructure; plates for Royal Navy vessels incl both aircraft carriers, various components for military aircraft and defence systems, nationally important infrastructure projects such as HS2
- The infrastructure steels made by Liberty are designed to deliver structural strength and durability to a host of projects such as bridges, power stations and airports, whilst using recycled steel and lower CO2 emissions in manufacture and distribution than alternatives
- The technology start-up business of Liberty Powder Metals co-located with the Materials Processing Institute campus in the Tees valley is the only commercial inert gas, vacuum atomised powder plant in the UK, designed specifically to provide metal powders for 3D printing and pressing into high integrity components
- Dedicated service centres in the UK, China and India offer the ability to service our customers' supply chains with bespoke combinations of added value processing and just-in-time delivery

THE UK'S STEEL PRODUCERS



MARCEGAGLIA STAINLESS SHEFFIELD LTD

Workforce:

470

Steelmaking capacity:

450 thousand tonnes per year

Production type:

Electric Arc Furnace

Products:

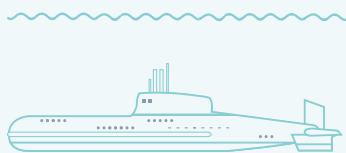
100's of different stainless steel specifications in rod, bar, rod, billet, bloom, ingots and slab for a large variety of product industry sectors

What is it used for:

Aerospace, automotive, construction, energy & power, packaging, domestic appliances & many more



THE MANUFACTURE AND SUPPLY OF STAINLESS STEEL, WHICH CONTRIBUTED TO THE 250,000 PINT MUGS USED AT THE GLASTONBURY FESTIVAL



STAINLESS STEELS, MADE AND INVENTED IN SHEFFIELD, CAN BE FOUND IN SUBMARINES AND OTHER SEAFARING CRAFT AROUND THE WORLD



- Marcegaglia purchased Outokumpu Long Products businesses in the UK, Sweden and USA with effect from 3rd January 2023
- Marcegaglia Group is a worldwide leading industrial group in Europe and globally with more than 6.2million tonnes of steel processed yearly
- Sheffield stainless steel melting shop is in the birth city of Stainless Steel
- Melting is based on recycled scrap (typically >80% scrap content) and overall has a 95% total recycled material content
- Produces flat products (slabs) and long products (billets, blooms and ingots) for transformation within the UK and abroad
- Scope 1&2 emissions are well below industry average
- Sheffield rod mill and bar mill producing stainless rod and stainless bar
- Outokumpu Long Products Ltd has changed its name to Marcegaglia Stainless Sheffield Ltd
- In addition to the recent purchase from Outokumpu, Marcegaglia UK is the largest precision tube manufacturer in the UK with facilities in Dudley and Rotherham

THE UK'S STEEL PRODUCERS



TATA STEEL

Workforce:

8,000

Steelmaking capacity:

5 million tonnes per year

Production type:

Integrated steelworks, Basic Oxygen Steelmaking

Products:

Hot-rolled, cold rolled, metallic coated, pre-finished steel (organic coated), packaging steel, electro-plated steel, electrical steel

What is it used for:

Automotive, manufactured goods, construction, packaging, lifting & excavating, energy & power



60,000 UNIQUE GRADES AND DIMENSIONS OF STEEL MADE AND SUPPLIED

TATA STEEL SUPPLIES ABOUT ONE MILLION TONNES A YEAR TO CARMAKERS, INCLUDING MINI, NISSAN AND JAGUAR LAND ROVER IN THE UK



TATA STEEL'S HIGH-STRENGTH STEEL HELPED SIEMENS GAMESA EXPAND ITS OFF-SHORE WIND TURBINE BLADE FACTORY IN HULL



- Tata Steel is the largest steelmaker in the UK with primary steelmaking at Port Talbot in South Wales supporting manufacturing and distribution operations at sites across Wales, England and Northern Ireland as well as Norway, Sweden, France and Germany. It also benefits from a network of international sales offices around the world
- Many of Tata Steel's products are uniquely designed around its customers needs and not available from other steelmakers
- Tata Steel supplies almost 50% of flat steel requirements to UK car makers, and plays an essential role in the transition to electric vehicles
- Tata Steel supplies over 1.3 million tonnes of steel into the UK construction sector, playing a significant role in the development of sustainable buildings, within its innovative products like Colorcoat Renew SC® converting solar radiation to usable heat energy
- Tata Steel's UK business supplies steel worldwide to manufacturers of food and drink cans, as well as paint and aerosols containers. Heinz uses the company's steel to make over one billion tins of beans, soup and more each year. Other products include the innovative Protact® polymer-coated steel
- Tata Steel has strategic R&D relationships with Swansea University and Warwick University and strong collaborative relationships with a number of other leading UK universities

FLAT PRODUCTS

CATNIC, TATA STEEL



Site Location:
Caerphilly, South Wales
Employee numbers:
185
Rolling/Drawing/Forming Capacity:
25,000 tonnes per year

Steel Products:
Steel lintels, steel profiles, roof and wall cladding
What is it used for:
Construction
Website address:
www.catnic.com



COOPER COATED COIL

Site Location:
Wolverhampton, West Midlands
Employee numbers:
60
Rolling/Drawing/Forming Capacity:
30,000 tonnes per year
Steel Products:
Organic coated coil and sheet

What is it used for:
Domestic bakeware, industrial bakeware, small electrical appliances and other general industrial applications
Website address:
www.coopercoated.co.uk

LIBERTY STEEL DALZELL



Site Location:
Motherwell, Scotland
Employee numbers:
130
Rolling/Drawing/Forming Capacity:
300,000 tonnes per year
Steel Products:
Hot rolled steel plates

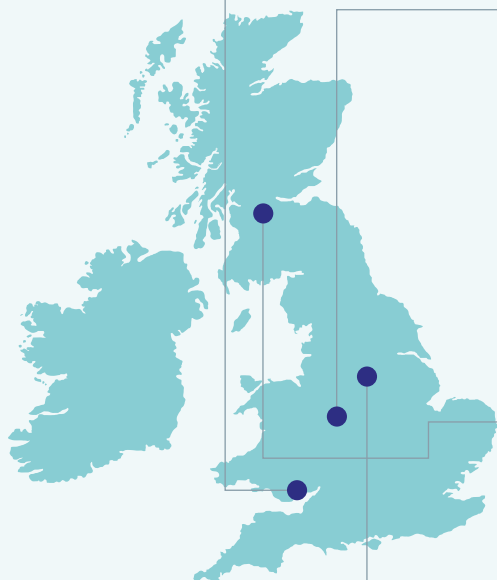
What is it used for:
Offshore oil & gas, renewable energy (onshore/offshore wind turbines), shipbuilding, pressure vessels, construction and infrastructure, line pipe, yellow goods, materials-handling, power
Website address:
www.libertysteelgroup.com/uk

LIBERTY STEEL NARROW STRIP



Site Location:
Rotherham, South Yorkshire
Employee numbers:
100
Rolling/Drawing/Forming Capacity:
140,000 tonnes per year
Steel Products:
Hot rolled and pickled coil up to 500mm wide

What is it used for:
Metal/Wood cutting bandsaw, industrial knives & blades, textile needles, razor blades, compressor flapper valves, agricultural wear parts, electrification components, electrical heating components, keys, bearing cases, cold rollers, razor blades, bandsaw blades, industrial needles, keys, agricultural, automotive
Website address:
www.libertysteelgroup.com/uk



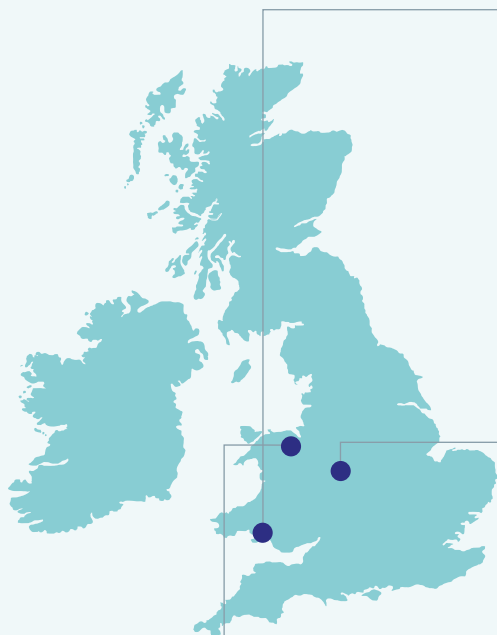
FLAT PRODUCTS



FLAT PRODUCTS

TATA STEEL TROSTRE

TATA STEEL



Site Location:

Llanelli, West Wales

Employee numbers:

630

Rolling/Drawing/Forming Capacity:

400,000 tonnes per year

Steel Products:

Tinplate & other packaging steels

What is it used for:

100% recyclable food and beverage cans, aerosol cans

Website address:

www.tatasteeleurope.com

TATA STEEL WEDNESFIELD

TATA STEEL

Site Location:

Wednesfield, West Midlands

Employee numbers:

530

Rolling/Drawing/Forming Capacity:

600,000 per year

Steel Products:

Processed strip coils & sheets, automotive components

What is it used for:

Processed coil & sheet products; specialist automotive centre

Website address:

www.tatasteeleurope.com

TATA STEEL SHOTTON

TATA STEEL

Site Location:

Flintshire, Wales

Employee numbers:

760

Rolling/Drawing/Forming Capacity:

500,000 tonnes per year

Steel Products:

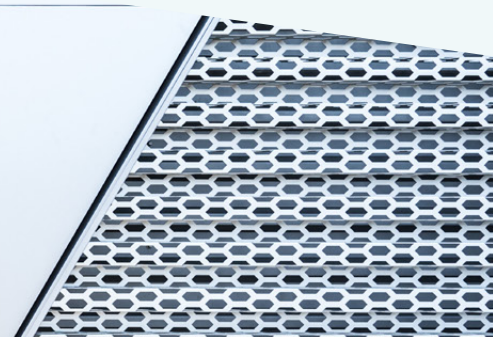
Galvanising and pre-coated steels, insulated panels, cladding profiles, roofing & decking, Colorsteels, Colorcoat pre-finished steels, steel processing centre

What is it used for:

Construction, building systems, building envelope, domestic and consumer application

Website address:

www.tatasteeleurope.com



LONG PRODUCTS

AARTEE BRIGHT BAR



Site Location:

Hot Rolled products = Dudley
 Bright Bar products = Willenhall
 Distribution = Rugby, Manchester,
 Newport, Sunderland, Southampton

Employee numbers:
 265

Rolling/Drawing/Forming Capacity:
 60,000 tonnes per year

Steel Products:

Hot rolled & Bright Steel Bar

What is it used for:

Hot rolled and bright rounds, flats,
 hexagons and squares for use within
 the automotive, general engineering,
 hydraulics and yellow goods industries

Website address:
www.aarteebrightbar.com

BRIGHT STEELS LIMITED



Site Location:

Malton, North Yorkshire

Employee numbers:
 85

Steel Products:
 Cold drawn flat bars, squares, hexagons
 & alloy rounds & the manufacture of
 special shapes

What is it used for:

Mechanical engineering, power generation
 equipment, hydraulic applications,
 automotive, materials handling and
 general engineering

Website address:
www.bright-steels.com

BRITISH STEEL SCUNTHORPE



Site Location:

Scunthorpe, North Lincolnshire

Employee numbers:
 3,396

Rolling/Drawing/Forming Capacity:
 2 million tonnes a year

Steel Products:

Sections, Rail, Wire Rod, Billet, Bloom, Slab

What is it used for:

Construction, rail, automotive, yellow
 goods and further re rolling

Website address:
www.britishsteel.co.uk

BRITISH STEEL SKINNINGROVE



Site Location:

Skinningrove, North Yorkshire

Employee numbers:
 368

Rolling/Drawing/Forming Capacity:
 250,000 tonnes per year

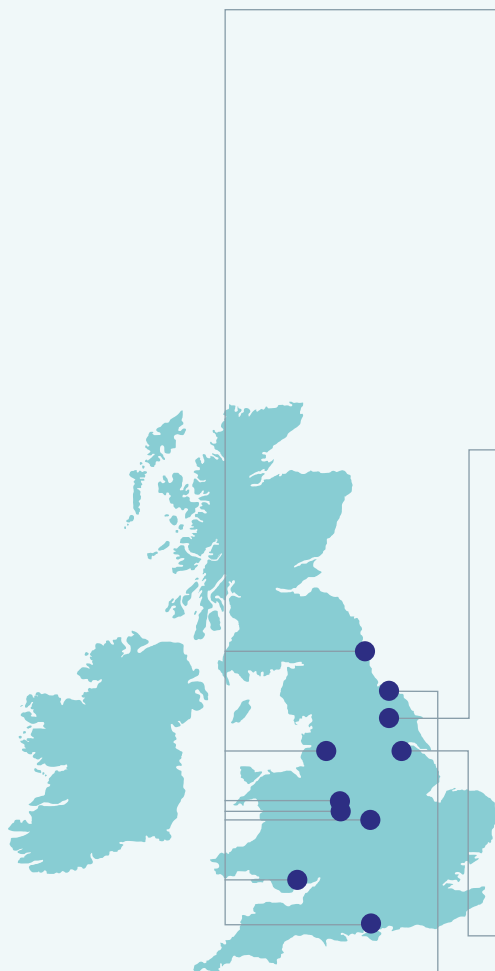
Steel Products:

Special profiles, including trackshoes, fork
 lift masts, bulb flats, crane rails, top hats
 and angles

What is it used for:

Yellow goods, construction, mining, ship
 building

Website address:
www.britishsteel.co.uk



LONG PRODUCTS

BRITISH STEEL TEESSIDE



Site Location:
Teesside, North Yorkshire

Employee numbers:
553

Rolling/Drawing/Forming Capacity:
800,000 tonnes per year

Steel Products:
Sections, including heavy beams, columns, angles and channels

Teesside Service Centre offers multi product offering with further processing of cut, paint and shotblast

What is it used for:
Construction

Website address:
www.britishsteel.co.uk

CELSA STEEL CARDIFF



Site Location:
Cardiff, South Wales

Employee numbers:
>1,800 (including downstream fabrication facilities)

Rolling/Drawing/Forming Capacity:
1.1 million tonnes per year

Steel Products:
Steel Long Products – steel reinforcing bar, steel reinforcing bar in coil, wire rod, various merchant bars & light sections (flats, angles, channels, plain round bars)

What is it used for:
Construction industry & general engineering

Website address:
www.celsauk.com

KIVETON PARK STEEL



Site Location:
Sheffield, South Yorkshire

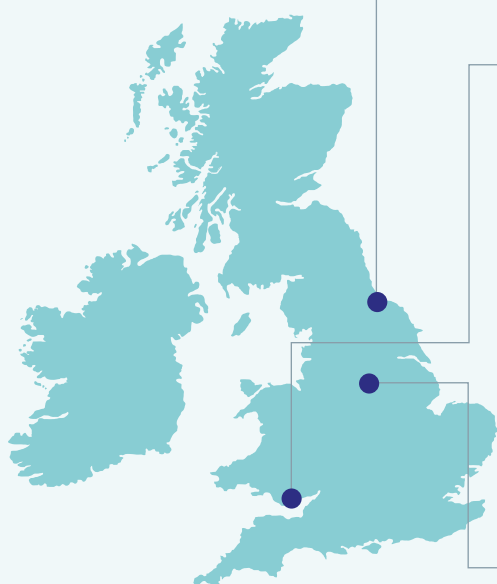
Employee numbers:
100

Rolling/Drawing/Forming Capacity:
25,000 tonnes per year

Steel Products:
Peeled/cold drawn/ground, heat treated precision high performance bright steel bars and coils 4mm - 75mm dia rounds and shapes with/without automated ultrasonic inspection & crack detection

What is it used for:
Automotive diesel injectors, torsion bars, springs, fasteners, chain saws, aerospace

Website address:
www.kpsteel.com



LONG PRODUCTS

LIBERTY ENGINEERING BAR



Site Location:

Rotherham, West Midlands

Employee numbers:

155

Rolling/Drawing/Forming Capacity:

150,000 tonnes per year

Steel Products:

Bright bar (cold drawn and turned)
Teesside Service Centre offers multi product offering with further processing of cut, paint and shotblast

What is it used for:

Automotive, yellow goods, hydraulics, aerospace, oil & gas, general engineering, precision machining applications

Website address:

www.libertysteelgroup.com/uk

LIBERTY MERCHANT BAR



Site Location:

Scunthorpe, North Lincolnshire

Employee numbers:

150

Rolling/Drawing/Forming Capacity:

300,000 tonnes per year

Steel Products:

Hot rolled merchant bars & light sections

What is it used for:

Shipbuilding and refurbishment, power distribution and generation, materials handling and storage, bridge building, off-shore installations (oil, gas and wind), construction, on and off-road, perimeter protection and security, transport (rail, train and bus), equipment and machinery and machinery

Website address:

www.libertysteelgroup.com/uk

ROTHERHAM STEEL & BAR



Site Location:

Rotherham, West Midlands

Employee numbers:

630

Rolling/Drawing/Forming Capacity:

1.2 million tonnes per year

Steel Products:

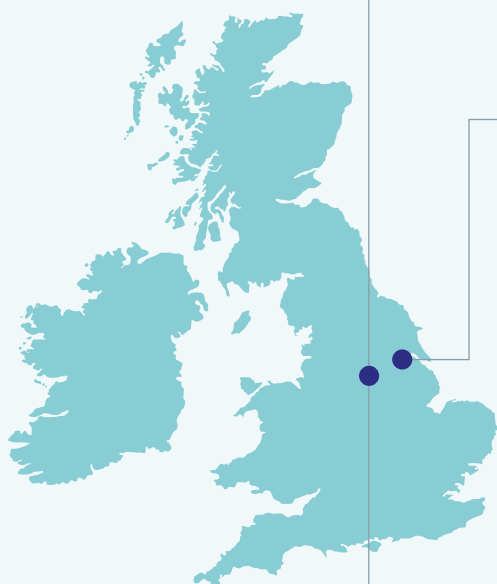
Ingot, bloom billet, straight bar, bar in coil, rebar

What is it used for:

Aerospace, oil & Gas, machining and forging applications

Website address:

www.libertysteelgroup.com/uk



SPECIALITY AND STAINLESS STEELS

HIGH VALUE MANUFACTURING



Site Location:

Stocksbridge, Bolton

Employee numbers:

600

Rolling/Drawing/Forming Capacity:

280,000 tonnes per year

Steel Products:

Specialist manufacturers of high end alloy and stainless steels

What is it used for:

Defence, engine, helicopters, landing gear, controls, aero structures, drilling & extraction, rotor components, bearings, power generation, mining, rail, forging and stockholding

Website address:

www.libertysteelgroup.com/uk

LIBERTY POWDER METALS



Site Location:

Middlesbrough, North Yorkshire

Employee numbers:

15

Production Capacity:

400 tonnes per year

Steel Products:

Manufacturer of inert gas atomised metal powder

What is it used for:

Additive Manufacturing (AM), Near Net Shape Powder Metallurgy, Hot Isostatic Pressing (PM HIP)

Website address:

www.libertysteelgroup.com/uk

MARCEGAGLIA STAINLESS SHEFFIELD LTD



Site Location:

Sheffield, South Yorkshire

Employee numbers:

470

Rolling/Drawing/Forming Capacity:

40,000 tonnes per year plus stainless steel service centre

Steel Products:

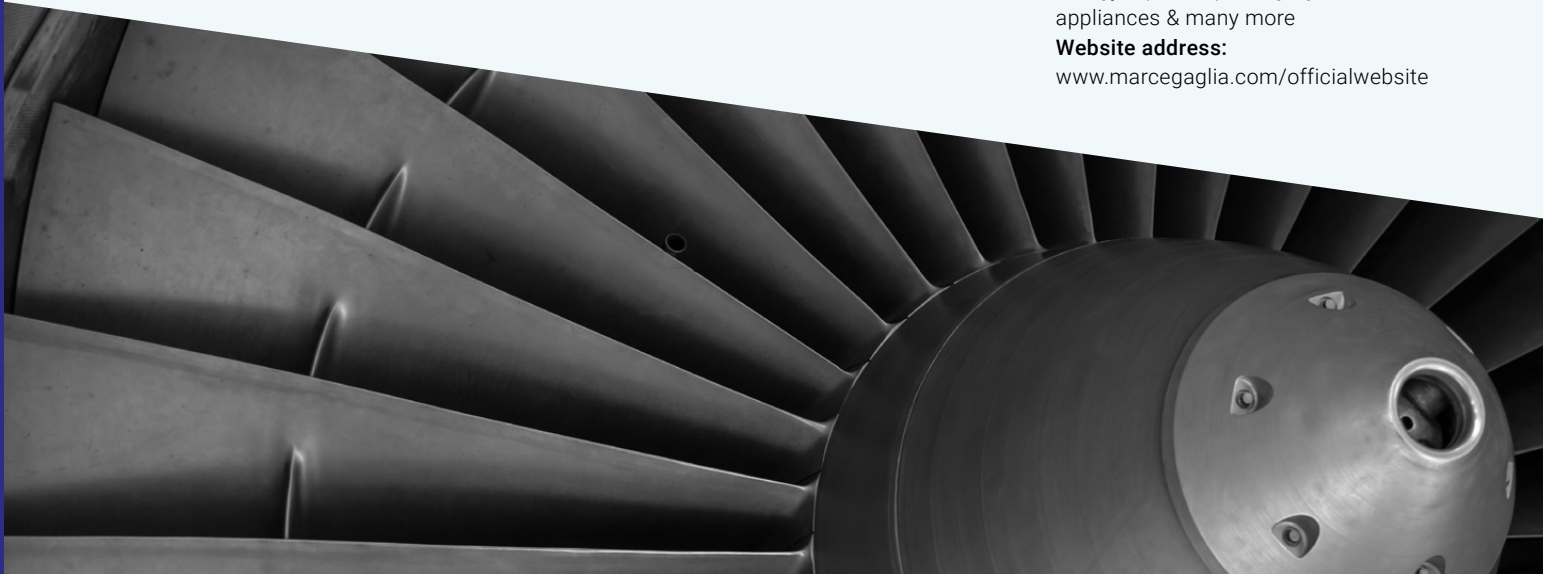
100's of different stainless steel specifications in rod, bar, rod, billet, bloom, ingots and slab for a large variety of product industry sectors

What is it used for:

Aerospace, automotive, construction, energy & power, packaging, domestic appliances & many more

Website address:

www.marcegaglia.com/officialwebsite



SPECIALITY AND STAINLESS STEELS

SHEFFIELD FORGEMASTERS



Site Location:
Sheffield, South Yorkshire

Employee numbers:
605

Production Capacity:
40,000 tonnes per year of forged and cast products

Steel Products:
Heavy and technically challenging forgings & castings. Consultancy services, design for manufacture & technology transfer, UKAS accredited laboratory testing

What is it used for:
Defence industry, civil nuclear, power generation, pressure vessels, offshore oil and gas, steel processing sector

Website address:
www.sheffieldforgemasters.com



SOMERS FORGE

Site Location:
Halesowen, West Midlands

Employee numbers:
140

Production Capacity:
4,000 tonnes open die forging press, 3 and 5-axis CNC milling machines, 20 Mtr deep hole boring and finish machining capability

Steel Products:
Complete one stop shop from forging, through to heat treatment, testing & finish machining

What is it used for:
Marine, defence, power generation, oil & gas, aerospace & general engineering. Over 150 years old Somers Forge has been producing parts for UK navy for over 100 years

Website address:
www.somersforge.com



UNITED CAST BAR (UK) LIMITED

Site Location:
Chesterfield, Derbyshire

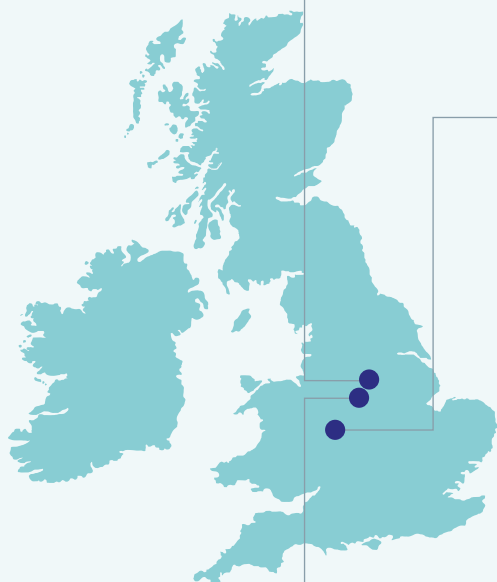
Employee numbers:
UK 115 (Group 270)

Production Capacity:
35,000 tonnes per year

Steel Products:
Nodular & flake cast irons

What is it used for:
Hydraulic cylinders & manifolds, parts for pneumatic equipment, pump & compressor rotors, glass mould & neck ring manufacture, machinery/machine tools & renewable energy

Website address:
www.unitedcastbar.com



TUBES & PIPES

LIBERTY STEEL HARTLEPOOL



Site Location:
Hartlepool, County Durham
Employee numbers:
160
Rolling/Drawing/Forming Capacity:
250,000 tonnes per year

Steel Products:
Line pipe/large diameter steel pipe
What is it used for:
Oil & gas, energy and power
Website address:
www.libertysteelgroup.com/uk

LIBERTY STEEL TREDEGAR



Site Location:
Gwent, South Wales
Employee numbers:
40
Rolling/Drawing/Forming Capacity:
75,000 tonnes per year
Steel Products:
Cold formed structural hollow sections

What is it used for:
Construction, mining, agriculture, marine, materials handling, heating and cooling, fabrication, street furniture, leisure equipment manufacture
Website address:
www.libertysteelgroup.com/uk

MARCEGAGLIA



Site Location:
Dudley, Oldbury, Rotherham
Employee numbers:
200
Rolling/Drawing/Forming Capacity:
180,000 tonnes per year
Steel Products:
Electro-welded carbon steel tubes

What is it used for:
Agricultural, horticultural, fencing, furniture, stockholders/distribution, automotive, construction, bulk packaging
Website address:
www.marcegaglia.com/officialwebsite

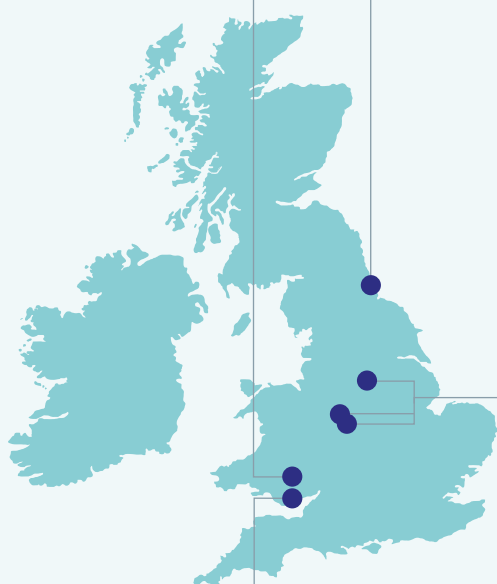
PIPE MANUFACTURING SOLUTIONS LTD

(formerly known as HDM Tubes Ltd)



Site Location:
Cardiff, South Wales
Employee numbers:
30
Rolling/Drawing/Forming Capacity:
50,000 tonnes per year

Steel Products:
Large OD spiral pipes & piles
What is it used for:
Foundation & piling
Website address:
www.pms-ltd.co.uk



TUBES & PIPES

TATA STEEL CORBY

TATA STEEL



Site Location:

Corby, Northamptonshire

Employee numbers:

500

Rolling/Drawing/Forming Capacity:

250,000 tonnes per year

Steel Products:

Hot and cold formed hollow sections and tubes

What is it used for:

Manufactures thin-wall welded tube from steel strip for use in a range of applications, including construction, lifting & excavating & energy & power market sectors

Website address:

www.tatasteeleurope.com

TATA STEEL HARTLEPOOL

TATA STEEL

Site Location:

Hartlepool, County Durham

Employee numbers:

300

Rolling/Drawing/Forming Capacity:

220,000 tonnes per year

Steel Products:

Tubes and hot & cold formed hollow sections

What is it used for:

Oil & gas applications & construction

Website address:

www.tatasteeleurope.com



WIRE

G JOHN POWER



Site Location:

Halesowen, West Midlands

Employee numbers:

20

Rolling/Drawing/Forming Capacity:

8,000 tonnes per year

Steel Products:

Cold heading, engineering wire, annealing

What is it used for:

Automotive, consumer goods, construction

Website address:

www.gjohnpower.co.uk

SUZUKI GARPHYTTAN LIMITED



(formerly known as KTS Wire Ltd)

Site Location:

Leeds, West Yorkshire

Employee numbers:

50

Rolling/Drawing/Forming Capacity:

25,000+ tonnes per year

Steel Products:

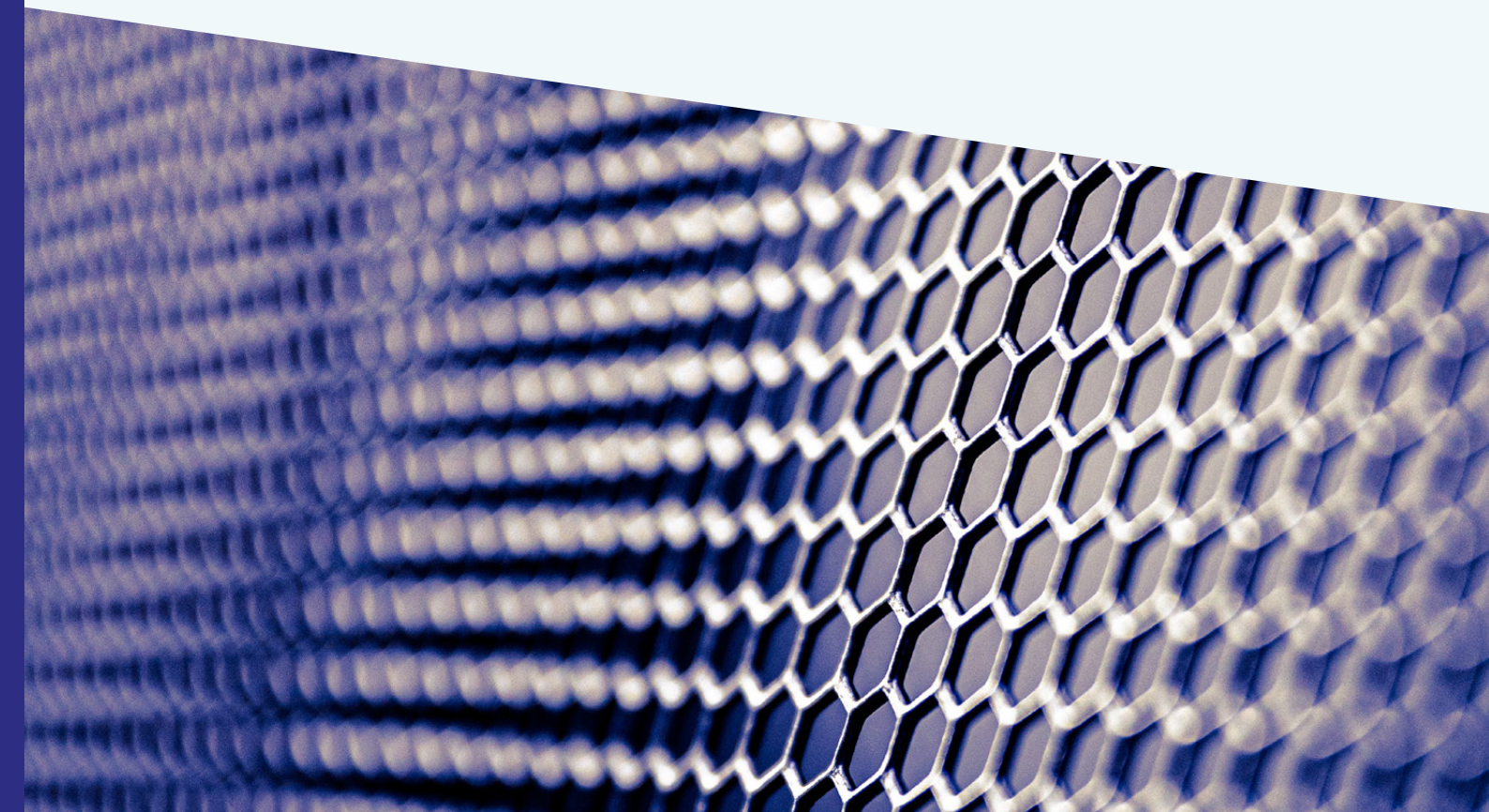
Die drawn &/or cold rolled, hardened & tempered or annealed round, flat, trapezoidal and shaped/profile wires in low/medium/high carbon steels & stainless alloys

What is it used for:

Various applications within automotive, bedding & seating, textile, consumer/leisure, pulp & paper, water treatment, construction, food, agriculture, mining, defence, chemical, fasteners & cold heading, spring, telecommunications, medical, oil & gas and enviro & renewables industry segments

Website address:

www.ktswire.co.uk
www.suzuki-garphyttan.com



RESEARCH

MATERIALS PROCESSING INSTITUTE



Site Location:
Middlesbrough, Teesside

Employee numbers:
75

Research:
World leading research and innovation, SME Technology Centre, plus specialist melting (up to 7 tonne batch)

Steel Products:
Process & product development, consultancy, training & specialist melting

What is it used for:
Private & collaborative research & innovation in advanced materials, the circular economy, industrial decarbonisation and digital technologies

Website address:
www.mpiuk.com

STEEL AND METALS INSTITUTE SEFYDLIAD DUR A METELAU



Site Location:
Swansea University, Swansea, South Wales

Employee numbers:
18

Research:
Specialist university research facility for product and process development, industrial decarbonisation, and creating circular economies

What is it used for:
Collaborative industrially-focussed innovation delivering bespoke research programmes with partners including steel and metals producers, suppliers and end users. Includes opportunities to co-locate industry personnel.

Website address:
www.samiswansea.co.uk

TATA STEEL TECHNOLOGY CENTRE



Site Location:
Warwick University, Coventry

Employee numbers:
28

Research:
World-leading programmes on light weighting and advanced steels for automotive, rapid alloy prototyping and modelling facilities, electric vehicle mobility emerging technologies, forming and joining and electrical steels

What is it used for:
Value engineering for automotive designs, sustainable coatings development, new steel chemistries, new joining technologies.

Website address:
www.tatasteeleurope.com/about-us/innovation

UK Steel is the trade association for the UK steel industry and champions the country's steel manufacturers.

We represent the sector's interests to government and promote our innovative, vibrant and dynamic industry to the public.

Together, we build the future of the UK steel industry.

UK Steel

Broadway House, Tothill Street, London SW1H 9NQ

+44 (0)20 7654 1518

steel@makeuk.org

@UKSteel__

www.uksteel.org



MakeUK.org

©2023 Make UK



Make UK is a trading name of EEF Limited Registered Office: Broadway House, Tothill Street, London, SW1H 9NQ. Registered in England and Wales No. 05950172